

# FOR SALE

6070 S. Lindbergh Blvd, St. Louis, MO 63123  
2 ACRES

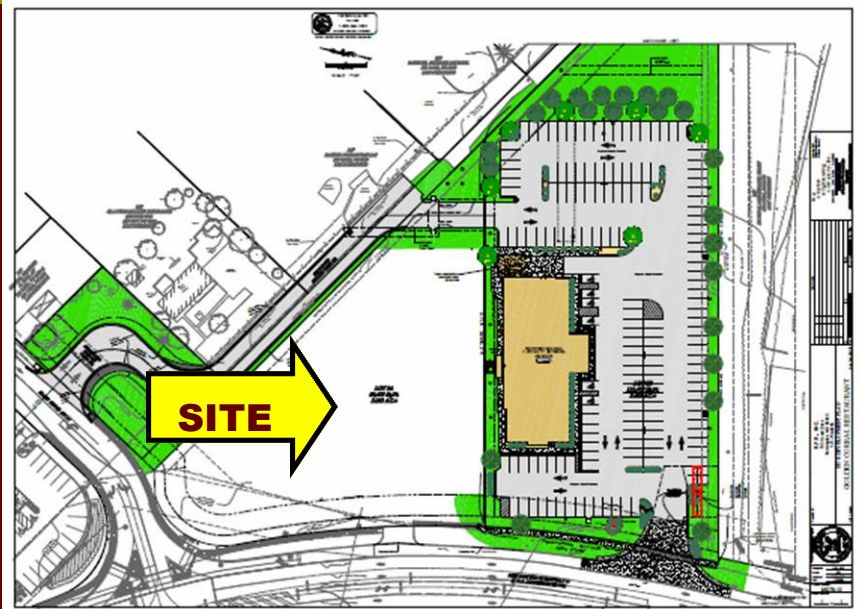
For More Information  
Please Contact:

**Stephen F. Bahn**

**314.849.5858**

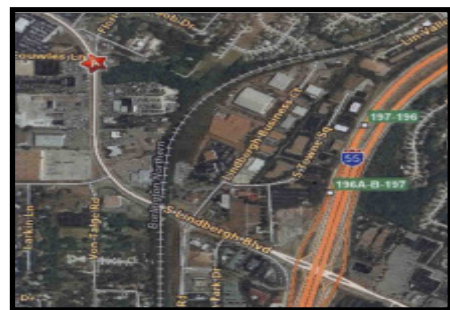
or

**314.503.7601**



- **NEW RETAIL DEVELOPMENT**
- Approximately 2 +/- acre lot located at the new signalized intersection of South Lindbergh and Flori Drive.
- 240 feet of frontage on S. Lindbergh
  - Site to be delivered pad ready
  - Located 1/2 mile north of I-55

**SALE PRICE:**  
**\$1,750,000.00**



The information herein is not warranted although it has been obtained by the owner of the property or from other sources. It is subject to change without notice. Sellers and brokers make no representation as to the environmental or other conditions of the property and recommend that Purchaser investigate fully.

[www.bahnrealty.com](http://www.bahnrealty.com)