

FOR SALE

10 ACRES 4948 Mattis Road, St. Louis, MO 63128

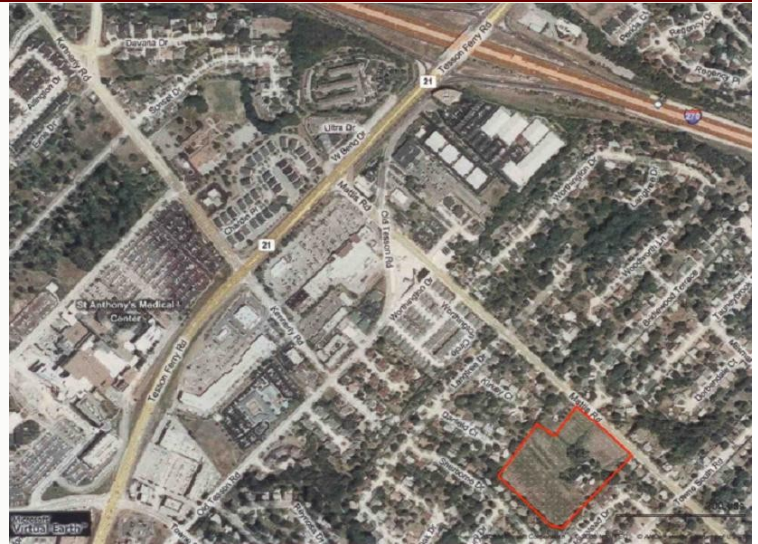
For More Information
 Please Contact:

Stephen F. Bahn

314.849.5858

or

314.503.7601

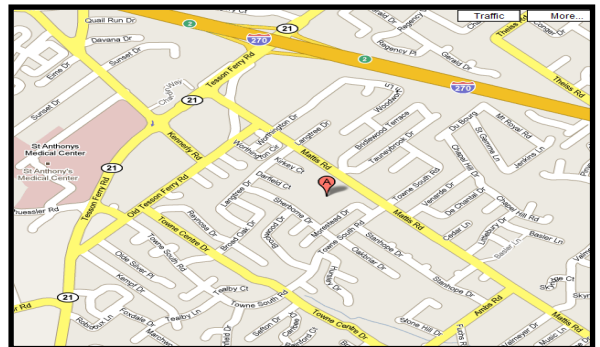


- Approximately 10 Acres located just off Tesson Ferry Road and I-270, just east of the Dierbergs Plaza
- One of the last developable 10 acre tracts in South County
- Zoned R-3 but priced for institution or retirement development that could produce 300 living units
 - All utilities to site
- 2008 Real Estate Taxes: \$2,267.00

SALE PRICE:
Call for Details
(314) 849-5858



www.bahnrealty.com



The information herein is not warranted although it has been obtained by the owner of the property or from other sources. It is subject to change without notice. Sellers and brokers make no representation as to the environmental or other conditions of the property and recommend that Purchaser investigate fully.

