

**FOR LEASE**

**11182 South Towne Square, St. Louis, MO 63123**



- 11,617 SF Retail Space
- 6,826 SF Retail/4,791 SF Warehouse
- Just off S. Lindbergh and I-55
  - 24 Parking Spaces
  - Ample signage
  - 2 loading docks
- Zoned "CC" City of Green Park with multiple uses
- Situated on .75 acres



**LEASE RATE:**  
**\$8.50 PSF Modified Gross**

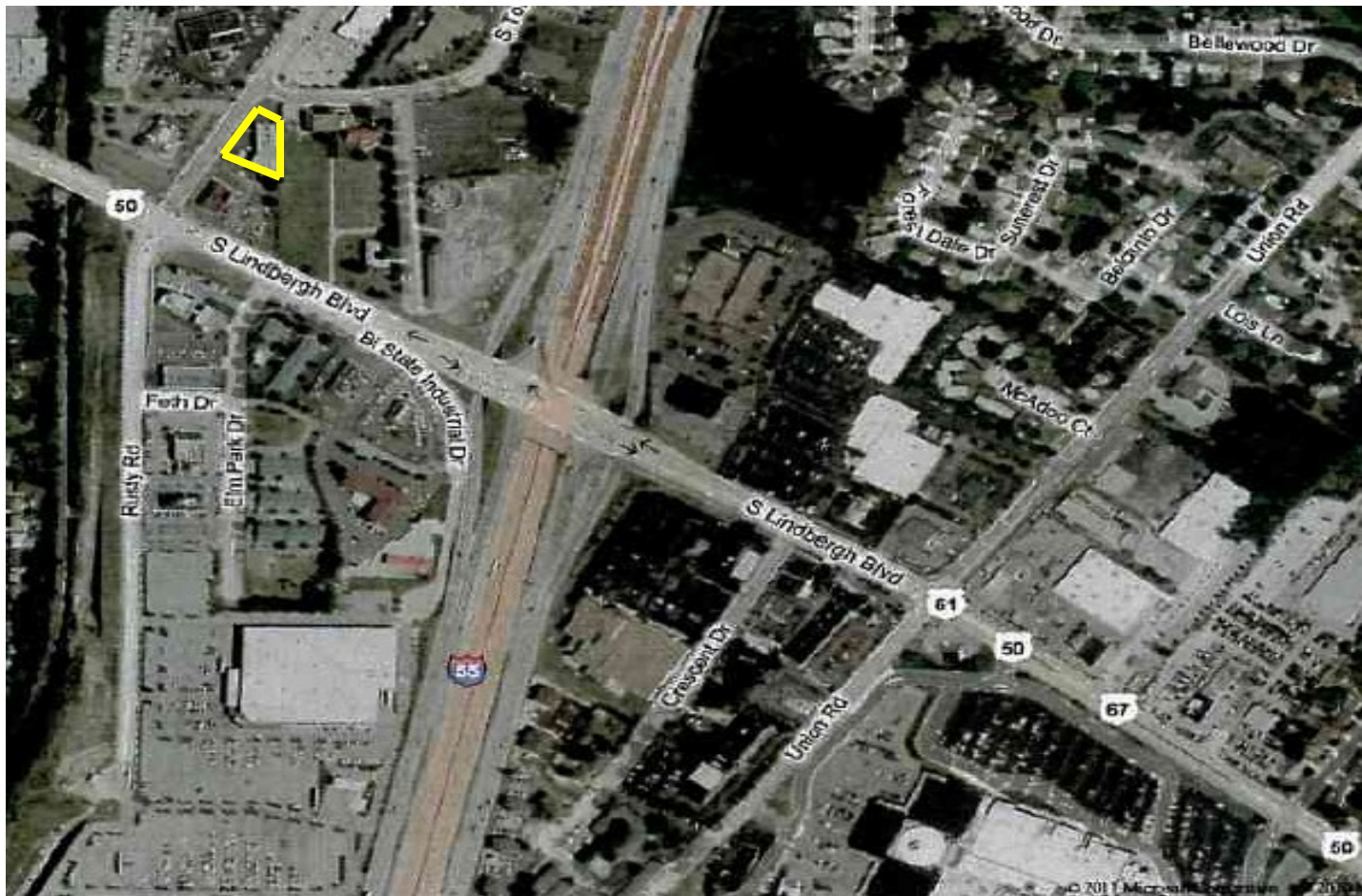
For More Information Contact:

**Stephen F. Bahn**

**314.849.5858**

**314.503.7601**





For More Information Please  
Contact:

**Stephen F. Bahn**

**314.849.5858**

or

**314.503.7601**



[www.bahnrealty.com](http://www.bahnrealty.com)